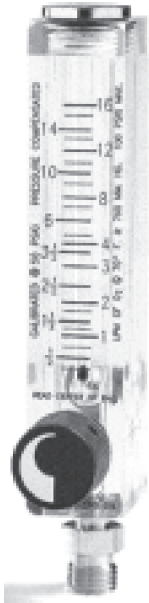


The Timeter® Classic & Soft-Touch Flowmeters



Neonates to adults, the entire series of time-tested Timeter® Classic Flowmeters demonstrates our unsurpassed knowledge of the needs of care providers and patients alike. You can see it in the accuracy. You can see it in the craftsmanship. You can see it in the performance, year after year. Because we understand that special care with extreme accuracy is critical to fragile, little bodies, Classic Neonatal Flowmeters are specially designed. When you're looking for a superior, long-lasting flowmeter that's easy to maintain and offers extreme accuracy, you'll find it in our Timeter® Classic series.



| Model Max 100 psi | Oxygen Flowmeter 200 cc | Oxygen Flowmeter 1 LPM | Oxygen Flowmeter 3 LPM | Oxygen Flowmeter 16 LPM | Oxygen Flowmeter 75 LPM | Air Flowmeter 16 LPM | Air Flowmeter 75 LPM |
|-------------------------------------|----------------------------|-----------------------------|---------------------------|-------------------------------|--------------------------------------|-----------------------------|--------------------------------------|
| Back Fitting | Extremely Low Flow | Very Low Flow 1/10-1 LPM | Low Flow 1/8 - 3 LPM | General Purpose 1/4-16 LPM | High Flow IMV & C-PAP 5-75 LPM | General Purpose ½-16 LPM | High Flow IMV & C-PAP 5-75 LPM |
| 3/4" Fitting 1/8" x 1/8" | 10-T01118 | 10-T01211 | 10-T0060 | 10-T0010 | 10-T0030 | 10-T0020 | 10-T0040 |
| Chemetron Male | 10-T03118 | 10-T03221 | 10-T0360 | 10-T0310 | 10-T0330 | 10-T1620 | 10-1640 |
| Oxequip Male | n/a | n/a | 10-T0160 | n/a | 10-T0130 | 10-T4020 | n/a |
| Ohmeda Male | 10-T04118 | 10-T04211 | 10-T0460 | 10-T0410 | 10-T0430 | 10-T1920 | 10-1940 |
| Puritan Bennett | 10-T02118 | 10-T02211 | 10-T0260 | 10-T0210 | 10-T0230 | n/a | n/a |
| DISS Female HT | 10-T12118 | 10-T12211 | 10-T1260 | 10-T1210 | 10-T1230 | n/a | 10-T2040 |
| DISS Female | 10-T06118 | 10-T06211 | 10-T0660 | 10-T0610 | 10-T0630 | n/a | n/a |
| DISS Male | n/a | 10-T10211 | 10-T1060 | 10-T1010 | 10-T1030 | n/a | 10-1540 |

The Soft-Touch Timeter® Flowmeter is durable, long-lasting and easy to maintain. Quality plus Value. Flowmeter hood is made of crack-resistant polycarbonate. Easier readability on the 0-5 LPM range. Steel float eliminates sticking caused by static electricity. Nickel-plated solid brass body provides durability and long life. Larger, easier to grip Soft-Touch knob. Color coded for air or oxygen.



| Back Fitting | Oxygen Flowmeter 15 LPM | Oxygen Flowmeter 15 LPM Power Take-off | Oxygen Flowmeter 8 LPM | Oxygen Flowmeter 8 LPM Power Take-off | Air Flowmeter 15 LPM | Air Flowmeter 15 LPM Power Take-off |
|-------------------------------------|----------------------------|--|---------------------------|---|-------------------------|---|
| 3/4" Fitting 1/8" x 1/8" | 10-15103 | 10-15103P | 10-08103 | 10-08103P | 10-15113 | 10-15113P |
| Chemetron Male | 10-15203 | 10-15203P | 10-08203 | 10-08203P | 10-15213 | 10-15213P |
| Oxequip Male | 10-15303 | 10-15303P | 10-08303 | 10-08303P | 10-15313 | 10-15313P |
| Ohmeda Male | 10-15403 | 10-15403P | 10-08403 | 10-08403P | 10-15413 | 10-15413P |
| Puritan Bennett | 10-15603 | 10-15603P | 10-08603 | 10-08603P | 10-15613 | 10-15613P |
| DISS Female HT | 10-15803 | 10-15803P | 10-08803 | 10-08803P | 10-15813 | 10-15813P |
| DISS Female | 10-15903 | 10-15903P | 10-08903 | 10-08903P | 10-15913 | 10-15913P |
| DISS Male | 10-15003 | 10-15003P | 10-08003 | 10-08003P | 10-15013 | 10-15013P |